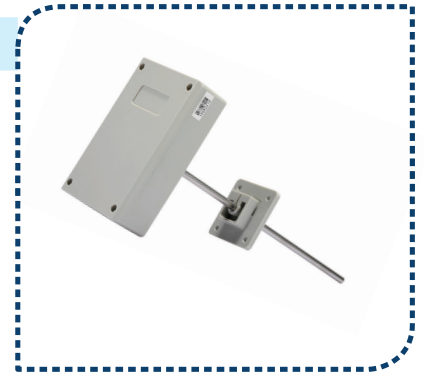


## DIGITAL TEMPERATURE TRANSMITTER

### Applications & Features :

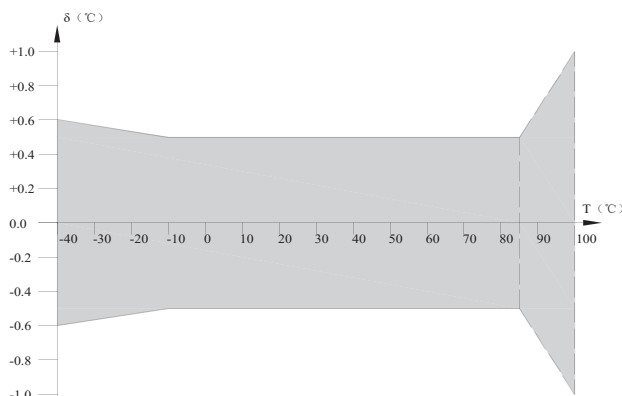
- These transmitters/controllers can be used for temperature monitoring & controlling in duct air
- High performance digital temperature sensor and digital technology applied, ensure accurate measurement fast response and good long term stability
- Multiple outputs selection, over voltage and reverse polarity protection, high reliability and anti-interference capability
- Optional relay for alarm or ON/OFF control
- Wide working temperature range
- MMI can set parameters and calibrate output, so that the product becomes a stand alone controller
- High protection rate up to IP65



### Specifications :

Sensor	: Digital temperature sensor
Range	: see models
Output	: 4~20mA (3 wires) / 0~10VDC, RS485/ Modbus
Storage Temperature	: -40~85°C
Relay	: 1xSPDT, 1A/30VDC, 0.5A /125VAC
Accuracy	: $<\pm 0.5^{\circ}\text{C}@ -10\sim 85^{\circ}\text{C}$
Power	: 15~28VAC/15~36VDC
Work Temp.	: -40~85°C, 0~95%RH (Non condensing)
Storage Temperature	: -40~85°C
Housing	: ABS, SS probe, SS well
Protection	: IP65
Approval	: CE
Optional Accuracy	: $0.25^{\circ}\text{C}@ -20 \sim 105^{\circ}\text{C}$

### Accuracy Curve:



Analog error:  $\pm 0.1\%$  FS, the biggest error after calibrated at 25 °C Analog output  
 thermal effect:  $\pm 0.007\%$  FS/°C Models

## DIGITAL TEMPERATURE TRANSMITTER

### ⚙️ Basic Model : TTD2

TTD2      Duct mount digital temp. transmitter

### ⚙️ Outputs : 1

1	4-20mA/0-10VDC
B	4-20mA/0-10VDC, RS485/Modbus

### ⚙️ Range <sup>Note1</sup> 2

1	-10~50°C
2	-10~90°C
3	-40~60°C
7	Others

### ⚙️ Relay <sup>Note2</sup> 1

0	No	1	1 *SPDT
---	----	---	---------

### ⚙️ Well Length : 2

1	125mm	2	200mm	7	Others
---	-------	---	-------	---	--------

Ordering Example:  
TTD2 - 1 - 2 - 1 - 2