

VARIABLE AREA FLOWMETER

Application:

"MTF" series Rotameter is a precision flowrate measuring instrument. For details refer to fig.B. A float (2) is free to move up & down in a orifice (1). Fluid flow causes the float to take up a position in which the buoyancy forces & the weight are balanced. The vertical position of the float is a measure of the instantaneous flowrate. The scale can be calibrated in mass or volume flow units. The coupling magnet (3) fitted into float (2) transmits float position to the follower magnet (4) which is attached to the indicating assembly in the indicator box. Thus the pointer moves with the position of the float.



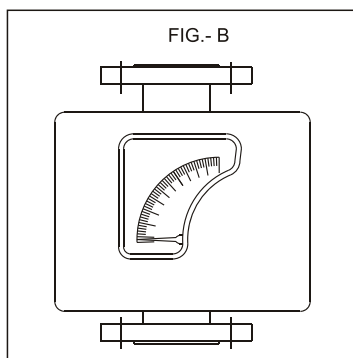
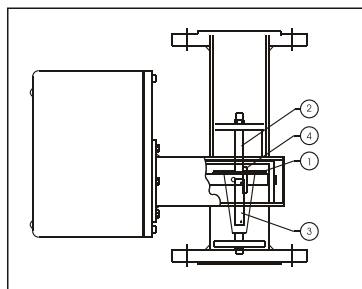
Specifications:

Rangeability	:	10 : 1
Accuracy	:	+ 2% Of Full Flow
Repeatability	:	0.5%
Scale length	:	90 Angular
Pressure rating	:	40 Bar
Fluid Temp.	:	-20 to 100 C
Connection	:	Process flanges machined as per customer's requirement.
Material of Construction	:	SS316 PTFE Lined
Indicator box	:	ABS, Cast AL, SS (optional)
Protection class	:	IP-65 on Request.

Accessories:

- Electronic Transmitter with 4 - 20 mA O/P
- Digital Flowrate Indicator Totaliser
- Minimum or Maximum Flow Switch

Dimensions:



CAPACITY TABLE						
LINE SIZE	MODEL NO.	Air at Amb Temp 760 Torr ABS				Pressure Drop mm WG
		LPH		USGPM		
		Minimum	Maximum	Minimum	Maximum	
3/4"	MTF-1	30	150	0.13	0.7	1000 approx.
	MTF-2	30	300	0.13	1.3	
	MTF-3	40	400	0.175	1.75	
	MTF-4	80	800	0.35	3.5	
1"	MTF-5	120	1200	0.5	5	
	MTF-6	140	1400	0.6	6	
	MTF-7	165	1650	0.72	7.2	
	MTF-8	170	1700	0.75	7.5	
	MTF-9	250	2500	1.1	11	
1.5"	MTF-10	270	2700	1.2	12	
	MTF-11	320	3200	1.4	14	
	MTF-12	500	5000	2.2	22	
2"	MTF-13	500	5000	2.2	22	
	MTF-14	600	6000	2.6	26	
3"	MTF-16	750	7500	3.3	33	
	MTF-17	1100	11000	4.8	48	
	MTF-18	1400	14000	6.15	615	