

SIDE MOUNTED LEVEL SWITCH

Special Features:

- Rugged Construction
- Low Cost
- Easy Installation
- Easy Replacement Of Electrical Assembly

Applications:

- Chemical Processing Equipment
- Alarms For Hydro-Pneumatic Tanks
- Ship Building Industry
- Sewage & Water Treatment Plant
- Food, Pharmaceuticals, Chemical & Power Plants



Performance Specifications:

| | |
|--------------------------|---|
| Housing Material | : Diecast Aluminium |
| Ingress Protection | : IP-65 |
| Process Connection | : 92 mm PCD Square Flange / ANSI Flange |
| Material of Wetted parts | : AISI 316 SS |
| Float Diameter | : 45 mm (48 mm at welded seam) |
| Insertion Depth | : 215 mm (Standard) |

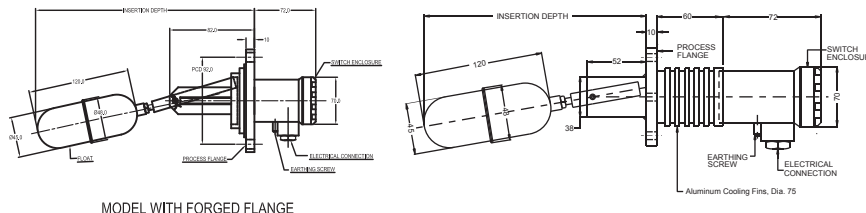
| | |
|---------------------|--|
| Cable Entry | : 1/2" BSP (F) with 1/2" BSP (M) Conduit |
| Switch Differential | : 3 to 25 mm |
| Switch Type | : Micro Switch |
| Switch Rating | : 5 A / 250 VAC |

| | |
|--------------------------------|-------------------------|
| Minimum Specific Gravity | : 0.75 |
| Maximum Operating Temperature: | -10°C to + 180°C |
| Maximum Operating Pressure | : 10 kg/cm ² |

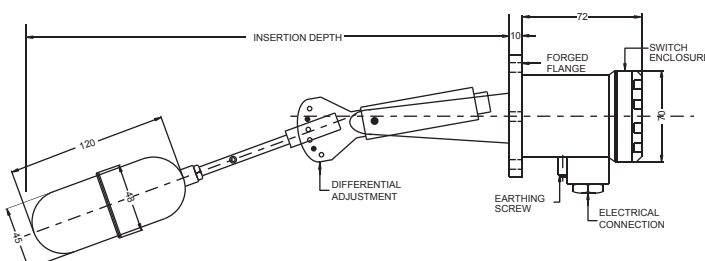
Dimensions:

TYPE - A: GENERAL PURPOSE

TYPE - H : HIGH TEMPERA TURE (Upto 350°C)



TYPE - Z : ADJUST ABLE DIFFERENTIAL



SIDE MOUNTED LEVEL SWITCH

HOW TO ORDER

Basic Model: LSSM

TYPE: A

- A GENERAL PURPOSE (Standard)
- T HIGH TEMPERATURE (UP TO 350 °C) (With Aluminum Cooling Fin)
- Z ADJUSTABLE DIFFERENTIAL (With Process Connection Option D03)

INSERTION DEPTH: 215A

- Min. 215 mm to 300 mm for Type A
- Min. 215 mm to 300 mm for Type T
- Min. 305 mm to 375 mm for Type Z
- Please specify Insertion length in mm.
- (Example : Write 215 A For length 215 mm & Type A)

HOUSING MATERIAL: D

- | | | | |
|---|------------------------------|---|-------------|
| D | DIE CAST ALUMINUM (Standard) | Y | AISI 316 SS |
|---|------------------------------|---|-------------|

SWITCH OUTPUT: 1

- | | | | |
|---|-------------------|---|-----------------|
| 1 | 1 SPDT (Standard) | 2 | 2 SPDT / 1 DPDT |
|---|-------------------|---|-----------------|

Process Connection: D01

- | | | | | | | | |
|-----|------------------------------------|-----|-----------------|-----|----------------|-----|----------------|
| D01 | 92 mm PCD SQUARE FLANGE (Standard) | 6NM | 1" NPT (M)* | B39 | 2" 150# RF | B40 | 2" 300# RF |
| D02 | 92 mm PCD ROUND FLANGE | 7NM | 1 1/2" NPT (M)* | B45 | 2 1/2" 150# RF | B46 | 2 1/2" 300# RF |
| D03 | 92 mm PCD FORGED SQUARE FLANGE | 8NM | 2" NPT (M)* | B51 | 3" 150# RF | B52 | 3" 300# RF |
| | | 6BM | 1" BSP (M)* | C33 | 4" 150# RF | C34 | 4" 300# RF |
| | | 7BM | 1 1/2" BSP (M)* | | | | |
| | | 8BM | 2" BSP (M)* | | | | |

OPTIONS (* For flange size above 3") PC

FOR NON STANDARD PRODUCTS/OPTIONAL ITEMS, PLEASE CONTACT FACTORY FOR DELIVERY AND MINIMUM QUANTITY OF ORDER.

- | | | | |
|----|--------------------------------|----|--|
| PC | PTFE COATING (UP TO 150°C) | GB | HOUSING - SUITABLE FOR GAS GROUP II A / II B |
| MF | MATCHING FLANGE | GC | HOUSING - SUITABLE FOR GAS GROUP II C |
| CG | 64 mm OD FLOAT OF AISI 316 SS* | GH | MATERIAL TEST CERTIFICATES** |
| SX | SS TAG PLATE | | |

Ordering Example: LSSM - A - 215A - D - 1 - D01 - PC

Note : Specifications and dimensions given in this product catalogue represents the state of engineering at the time of printing.
Modifications may take place and materials specified may be replaced by others without prior notice.